

EPIC

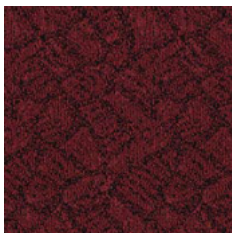




CONSTRUCTION	LOOP
PILE FIBER COMPOSITION	100% Nylon (Polyamide 6)
YARN TYPE	BCF
DYE METHOD	Solution Dyed
PILE WEIGHT	675 g/m ²
NUMBER OF TUFTS	280450/m ²
TUFTING GAUGE	1/10"
PRIMARY BACKING	Non-Woven
SECONDARY BACKING	StableShield - 100% Vinyl
OPTIONAL BACKING	Recova -PU Cushion, EcoShield -100% Recycled Vinyl
TILE SIZE	50 cm x 50 cm
PILE HEIGHT	3.0 mm / 5.0 mm
TOTAL PILE HEIGHT	8.0 mm
PILE TREATMENT	INVISTA Anti-Soil Treatment, Anti-Microbial (Optional)
RECOMMENDED INSTALLATION	Quarter Turn or Brick

SPECIFICATIONS

COLOURLINE



EPIC - 625



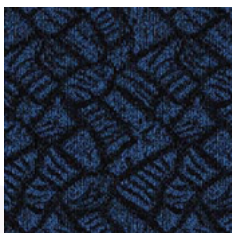
EPIC - 644



EPIC - 647



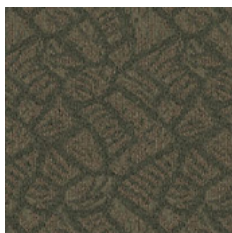
EPIC - 654



EPIC - 655



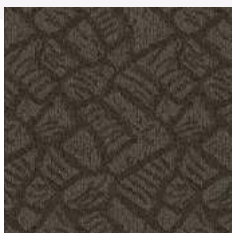
EPIC - 660



EPIC - 664



EPIC - 665



EPIC - 666

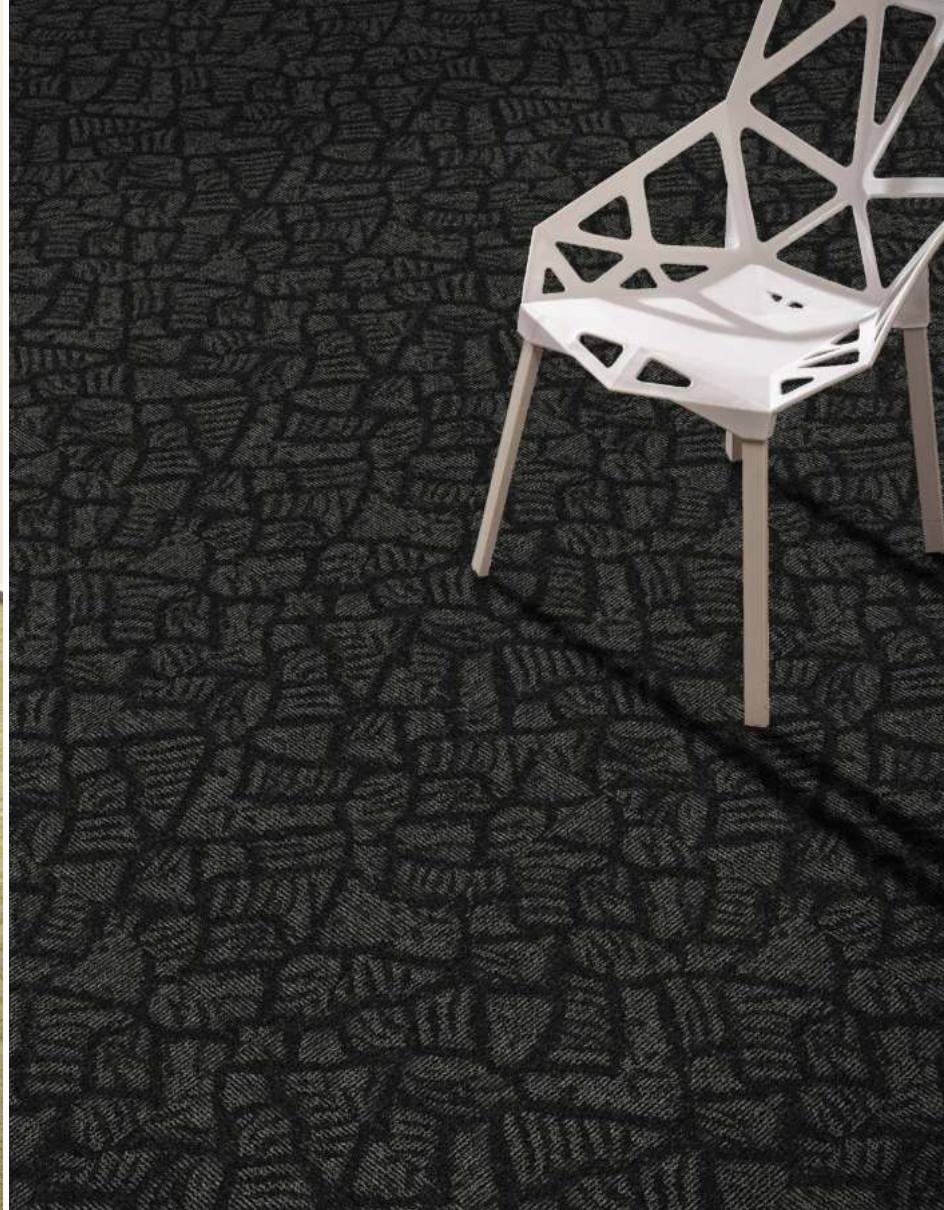


EPIC - 668



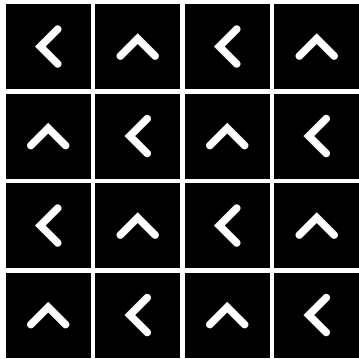
EPIC - 678



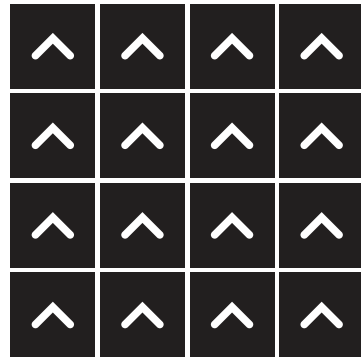


HOW TO INSTALL

QUARTER TURN



MONOLITHIC





Standard
CARPETS

www.standardcarpets.com